

# AUTOStop® Mini Plus (Export)

---

## Handheld Brake Tester



License ID number: 10242



#### DECLARATION OF CONFORMITY

We, AutoTest Products Pty Ltd. declare under our sole responsibility that the product AutoTest® Mini Plus (Export) is in conformity with the provisions of the following Council Directive: 1999/5/EC.

For a copy of the Declaration of Conformity, please contact [sales@autotest.net.au](mailto:sales@autotest.net.au) or refer to the document found in your product packaging.

© AutoTest Products Pty Ltd [2026].

Copyright in the drawings, information and data recorded in this document (the information) is the property of AutoTest Products. This document and the information are solely for the use of the authorised recipient and this document may not be used, copied, or reproduced in whole or part for any purpose other than that for which it was supplied by AutoTest Products. AutoTest Products makes no representation, undertakes no duty, and accepts no responsibility to any third party who may use or rely upon this document or the information.

Under no circumstances shall AutoTest Products be responsible for any loss of data or income or any special, incidental, consequential or direct damages howsoever caused. The contents of this document are provided “as is”. Except as required by applicable law, no warranties of any kind, either express or implied, including, but not limited to, the implied warranties of merchantability and fitness for a particular purpose, are made in relation to the accuracy, reliability, or contents of this document. AutoTest Products reserves the right to revise this document or withdraw it at any time without prior notice.

## FOR YOUR SAFETY

Read these simple guidelines. Not following them may be dangerous. Read the complete user guide. Further detailed information is given in this manual.



### SWITCH ON SAFELY

Do not switch the device on when wireless device use is prohibited or when it may cause interference or danger.



### FOLLOW INSTRUCTIONS

To ensure accurate results and safety, please use this product in accordance with the user manual, otherwise warranty may not be provided if the product is damaged.



### USE SENSIBLY

Use only in the positions as explained in the product documentation.



### CLEAN AFTER USE

Clean the housing using a damp cloth or a mild soap solution. Avoid the use of abrasives, alcohol, or solvents when cleaning the instrument.



### FLAMMABLE ENVIRONMENTS

Please do not use this product in flammable, explosive, humid or corrosive environments.



### DAMAGE

To prevent inaccurate measurements, discontinue use if the product is damaged, or has been dropped.



### CORRECT SETTINGS

Please use the correct emissivity to obtain accurate temperature readings



### QUALIFIED SERVICE

Only qualified personnel may install or repair this product.



### ACCESSORIES AND BATTERIES

Use only approved accessories and batteries. Do not connect incompatible products.



### WATER-RESISTANCE

Your device is not water-resistant. Keep it dry.



### CONNECTING TO OTHER DEVICES

When connecting to any other device, read its user guide for detailed safety instructions. Do not connect incompatible products.



### WARM UP BEFORE USE

To ensure the measurement accuracy, please warm up the device for 10 minutes before measuring if the product has not been used for a long time.

# TABLE OF CONTENTS

<b>1</b>	<b>SCOPE</b> .....	<b>6</b>
1.1	Device Purpose & Technology .....	6
1.2	Applicable standards .....	6
1.3	Regulatory Compliance.....	6
1.4	Personnel Training Frameworks .....	7
<b>2</b>	<b>UNPACKING AND FIRST TIME USE</b> .....	<b>7</b>
2.1	Instrument Activation.....	8
2.2	Self-Test and Battery Check.....	8
<b>3</b>	<b>APPLICATION INFORMATION</b> .....	<b>8</b>
3.1	Application .....	8
<b>4</b>	<b>OPERATION</b> .....	<b>9</b>
4.1	Test Conditions and Test Area .....	9
4.2	Set-up Inside Vehicle .....	9
4.3	Changing the Units .....	9
4.4	Performing a Test .....	10
4.5	Test Instructions Summary .....	11
4.6	Other Functions.....	12
4.7	Printing on Bluetooth Printer (optional accessory) .....	13
4.8	Maintenance.....	14
<b>5</b>	<b>DOWNLOADING TEST RESULTS</b> .....	<b>14</b>
5.1	Installing the Data Logger Software.....	14
5.2	System Requirements .....	15
5.3	Downloading Tests using the Data Logger Software .....	15
5.4	Using the Data Logger Software .....	26
<b>6</b>	<b>DETAILED MENU REFERENCE</b> .....	<b>28</b>
6.1	LED Charging Port Description .....	32

<b>7</b>	<b>SPECIFICATIONS .....</b>	<b>33</b>
<b>7.1</b>	<b>Hardware Specifications .....</b>	<b>33</b>
<b>7.2</b>	<b>Features .....</b>	<b>33</b>
<b>8</b>	<b>SERVICE AND REPAIR .....</b>	<b>34</b>
<b>8.1</b>	<b>Packaging .....</b>	<b>34</b>
<b>8.2</b>	<b>Shipping .....</b>	<b>34</b>
<b>9</b>	<b>WARRANTY .....</b>	<b>35</b>
<b>9.1</b>	<b>Application of these Conditions .....</b>	<b>35</b>
<b>9.2</b>	<b>Inconsistencies .....</b>	<b>35</b>
<b>9.3</b>	<b>Warranty Terms and Conditions .....</b>	<b>35</b>

# 1 SCOPE

This manual provides an instructional guide for use of the product and defines the operational parameters and compliance frameworks for the installation and use of the AutoStop® Mini Plus (Export).

## 1.1 Device Purpose & Technology

This instrument determines the measurement of deceleration of vehicles, for the purpose determining roadworthiness.

## 1.2 Applicable standards

Operation and deployment of this product strictly complies with all relevant directives:

2004/108/EC The Electromagnetic Compatibility Directive

2002/95/EC The Restriction of Hazardous Substances Directive

2002/96/EC The Waste Electrical and Electronic Equipment Directive

Is in conformity with the applicable requirements of the following documents:

BS EN 61000-6-1 Electromagnetic compatibility (EMC). Generic standards. Immunity for residential, commercial and light industrial environments. 2007

BS EN 61000-6-3 Electromagnetic compatibility (EMC). Generic standards. Emission standard for residential, commercial and light industrial environments. 2007

## 1.3 Regulatory Compliance

- ECE/TRANS/WP.29/GRRF/2008/15 Regulation 13 and 13H
- New Zealand - LTSA Reg 68 & 88
- Turkey - SR/VP/036
- France - SR/VP/036
- South Africa - SANS 1589
- USA - 49CFR 393.52
- Indonesia - ECE 353

- Europe & other - ECE 353

Please refer to your local government regulator to confirm applicable certification.

## 1.4 Personnel Training Frameworks

- Refer to local regulations as accredited training may be required

# 2 UNPACKING AND FIRST TIME USE

Congratulations on your choice of an AutoStop Mini Plus (Export). Please take the time to read this User's Manual before using the AutoStop Mini Plus (Export) in the field. Incorrect or inappropriate use of this instrument may void the warranty. Retain the packing materials for future shipping and transport of the unit for periodic calibration.

Please complete the warranty registration card and post it to AutoTest Products Pty Ltd, alternatively visit our website [www.autotestproducts.co.uk](http://www.autotestproducts.co.uk) and complete your warranty registration online. Your warranty registration ensures that you are kept up to date on any software or hardware changes to your AutoStop Mini Plus (Export).

The packing box of your AutoStop Mini Plus (Export) should contain the following:

- AutoStop Mini Plus (Export)
- QR Code Information Card (scan to access product manual, brochure and other information)
- Warranty Registration Card
- Calibration Certificate
- Declaration of Conformity

Optional Accessories:

- MiniPlus Data Logger Software
- Bluetooth Wireless printer
- Rare Earth magnet motorbike kit

## 2.1 Instrument Activation

When you receive your new meter, you must activate it before use. To do so, turn on the instrument for the first time. The main menu will open and the first option on the menu will be “**Activate**”. Press **ENTER** to begin activation.

You will be prompted to enter the 5-digit serial number. Press **ENTER** to confirm or **DEL** to re-enter. Once your meter is activated, it is ready for use, and you will never need to perform the activation again.

## 2.2 Self-Test and Battery Check

The self-test function is activated each time the AutoStop Mini Plus (Export) is powered; it checks the clock, battery level and the calibration due date. After initial power up, the display will read “**Test?**”. If the battery does not have sufficient charge to be used, then it will display “**Warning: Battery Low**”.

# 3 APPLICATION INFORMATION

## 3.1 Application

AutoStop Mini Plus (Export) determines triaxial deceleration, measuring forward as well as sideways deceleration (lane change). AutoStop Mini Plus (Export) has a twelve-button operation via a tactile membrane keypad with LCD display. It is lightweight (500grms) and compact (200x70x40mm) and can be installed anywhere in the vehicle.

## 4 OPERATION

### 4.1 Test Conditions and Test Area

The vehicle must be stationary (at a complete stop) prior to commencement of the test. Ideal conditions are to test the vehicle at a location where no other or few vehicles are present. If it is necessary to use another area, such as a public road, only commence the test if there is no risk of an accident.

The test area should be a sealed, flat bitumen road.

The headwind should be less than 15km/h.

The test starts with first movement of the vehicle and concludes when the vehicle comes to a complete stop.

The vehicle's forward direction is established when it first begins moving. For example, if the test starts as the vehicle pulls away from the kerb, the calculated forward direction may be offset and not aligned with the true forward direction.

The first movement of the vehicle must be in the forward direction.

Always ensure that brake testing procedures are carried out in accordance with the latest version of your local government's inspection manual.

### 4.2 Set-up Inside Vehicle

Attach the Mini Plus (Export) to the dashboard, front passenger seat, foot well or centre console so that the screen is clearly visible and the buttons are accessible.

AutoStop Mini Plus (Export) self-aligns by identifying its orientation during acceleration at the beginning of each test. Mini Plus (Export) can be installed at any angle facing any orientation but must be secure for the entire duration of the test as movement can cause incorrect deceleration readings.

### 4.3 Changing the Units

The average and maximum deceleration recorded during a test can be displayed in different units; **g**, **m/s<sup>2</sup>**, or **%** (where 0% = 0.00g, 100% = 1.00g).

To select the acceleration unit:

1. Press the **ON/OFF** button to power on the instrument
2. The display will show "**Test?**". Press **→** until "**Set Accel. Unit?**" is displayed
3. Press **→** to cycle through the available options: **m/s<sup>2</sup>**, **g**, or **%**.
4. Press **ENTER** to confirm your selection

The units for speed, stopping distance, and side shift can be set to either **imperial** or **metric**.

To change the unit system:

1. From the main menu, select “**Imperial/Metric?**” and press **ENTER**
2. Use the selection control to choose **Imperial** or **Metric**
3. Press **ENTER** to confirm

The units used in each system are shown below:

UNIT	IMPERIAL	METRIC
Speed	Miles per hour (mph)	Kilometers per hour (km/h)
Stopping distance / Side shift	Feet (ft)	Meter (m)

#### 4.4 Performing a Test

Turn on AutoStop Mini Plus (Export) by pressing **ON/OFF**.

The Mini Plus (Export) will go through a start-up procedure and show the calibration due date. The display will show “**Test?**” press ‘**ENTER**’.

The Mini Plus (Export) will initialise the test procedure by prompting the user to enter “**Examiner ID**”, “**Customer Name**” and “**Vehicle Registration No.**”

The Mini Plus (Export) will remember the previously stored Examiner ID. To change the Examiner ID, press —▶ then key-in the new ID.

The Mini Plus (Export) will then show “**Press any key to commence the test**”. After pressing any button, the display will show “**Ready to go**”.

Drive the vehicle to the desired test speed and apply the brakes.

When the vehicle has come to a stop, the Mini Plus (Export) will finish the calculations and will display the results – you can then simply compare them with the specific brake values according to your local regulations.

The results that will be displayed are:

1. Average Deceleration
2. Maximum Deceleration
3. Test Duration

## 4.5 Test Instructions Summary

SCREEN DISPLAY	INSTRUCTION	BUTTONS TO PRESS
Blank Screen	Switch ON	<b>ON / OFF</b>
Initial Splash Screen		Press any button to skip
Test ?	Start to run test	<b>ENTER</b>
Examiner?	Enter Examiner ID if it is not stored previously	Press <b>→</b> button and key-in ID and press <b>ENTER</b>
Customer:	Enter customer name	Key-in customer name and press <b>ENTER</b>
Reg No:	Enter the Registration no	Key-in registration no and press <b>ENTER</b>
Test with GPS?	Conduct test with GPS	Press <b>ENTER</b> for <b>YES</b> and any other key for <b>NO</b>
Press any key to commence the test	Press any button to commence the test	Press any button
Ready to go...	Accelerate the vehicle	
Prelude...	Forward direction detected. Keep accelerating to desired speed and then brake	
Sampling...	Wait for result	
Calculating...	Wait for result	
Save?	To save test result	Press <b>ENTER</b> to save or <b>→</b> to go to next item
Print?	To print test results on remote Bluetooth printer	Press <b>ENTER</b> to save or <b>→</b> to go to next item

Print Another?	To print duplicate test result	Press <b>ENTER</b> if you want to print the test result or press <b>—▶</b>
Repeat Test?	To repeat same test	Press <b>ENTER</b> to repeat the test or <b>—▶</b> to go to main menu.

**Must:**

- Fix Mini Plus (Export) securely
- Install in a stationary vehicle
- Must drive in a straight line

**Must not:**

- Turn car after starting test
- Hold unit in hand or on body
- Move Mini Plus (Export) after pressing start
- Skid wheels

**“A good stop is like stopping at a traffic light – steady.”**

## 4.6 Other Functions

- **View Results?** : Press **ENTER** and the display will show the test number and date & time of test. Press **—▶** to select the required test number and press **ENTER** to view each test result.  
Mini Plus (Export) can store up to 200 test results.  
At the end there is a “**Clear Results?**” option to erase all test results.  
The Mini Plus (Export) will hold 200 tests and will display “**Memory full**” when the memory is full and stored data must be erased.
- **Set acceleration units?**: Press **ENTER** to select acceleration unit. The acceleration units can be changed to g, percentage or m/s<sup>2</sup>
- **Imperial/Metric?**: Press **ENTER** to change to Imperial or Metric units.
- **View Clock?**: This function is for viewing the date & time set on Mini Plus (Export). Press **ENTER** to view the clock

- **Battery Life?:** Press **ENTER** to view the battery life of the Mini Plus (Export).
- **View Accel?:** This function is to view the X, Y and Z-axes of the accelerometer. Press **ENTER** to view these values.
- **View Test Count?:** This function is to view the total number of tests carried on the Mini Plus (Export) after calibration. Press **ENTER** to view the test count.
- **Print type?:** This function is for the Bluetooth printer. Press **ENTER** to select Bluetooth. Press “**Yes**” or “**NO**” for pairing the Mini Plus (Export) with printer.
- **Language?:** This function allows users to select a different interface language such as English, French and Spanish. Press **ENTER** to view available languages.

Note: results obtained using French language will be based on SRV-P036 standard.

- **Delete Data?:** Select the “**Delete**” or “**Delete all**” function to clear the results from the Mini Plus (Export).

#### 4.7 Printing on Bluetooth Printer (optional accessory)

To print the test results on the optional Bluetooth printer, switch on the printer. Mini Plus (Export) will display “**Finding printer**” while searching for the Bluetooth printer. Once the Bluetooth printer is found, Mini Plus (Export) will automatically issue the printout of the test via the Bluetooth printer.

**Note:** When the Mini Plus (Export) cannot find a Bluetooth printer, it will display “**No printer found**” and then “**Try again**” on the LCD screen. To pair, press **OFF** on the Bluetooth printer and then **ON** to pair.

## 4.8 Maintenance

Do not drop or hit the instrument.

Do not disassemble the instrument as this may damage the delicate electronic circuits, causing device failure.

Do not subject the instrument to high temperatures or store the instrument in high temperature, high humidity, flammable, explosive and strong electromagnetic environments.

Clean the instrument with a soft cloth using a small amount of water or neutral detergent to wipe the case. Abrasives and solvents should not be used as they may create corrosion and damage the instrument.

## 5 DOWNLOADING TEST RESULTS

The AutoStop Mini Plus (Export) can store up to 200 test results, numbered 1 to 200. Stored results can be downloaded to a PC using either a USB cable or Bluetooth connection.

To download test data, the data logger software must first be installed on your PC.

### 5.1 Installing the Data Logger Software

You can install the software using one of the following methods:

Option 1: QR Code

Use the QR Code Information Card provided with the instrument.

Scan the code to access the *AutoStop Mini Plus* product page.

Navigate to the “**Downloads**” section and download the data logger software.

Option 2: Autotest Website

Visit: <http://www.autotestproducts.co.uk>

Navigate to:

*Products* → *Workshop Equipment* → *Brake* → *AutoStop Mini Plus Export Break Meter*  
- scroll down the page → *Download* → *AutoStop Mini Plus Export MTS Interface*

## 5.2 System Requirements

If you have downloaded the software from the web, simply double click on the downloaded file to install the software, perform the following steps:

1. Select installation file “**setup.exe**” and run it.
2. Follow Setup prompts. Make sure you run the application with administrator level privileges.

## 5.3 Downloading Tests using the Data Logger Software

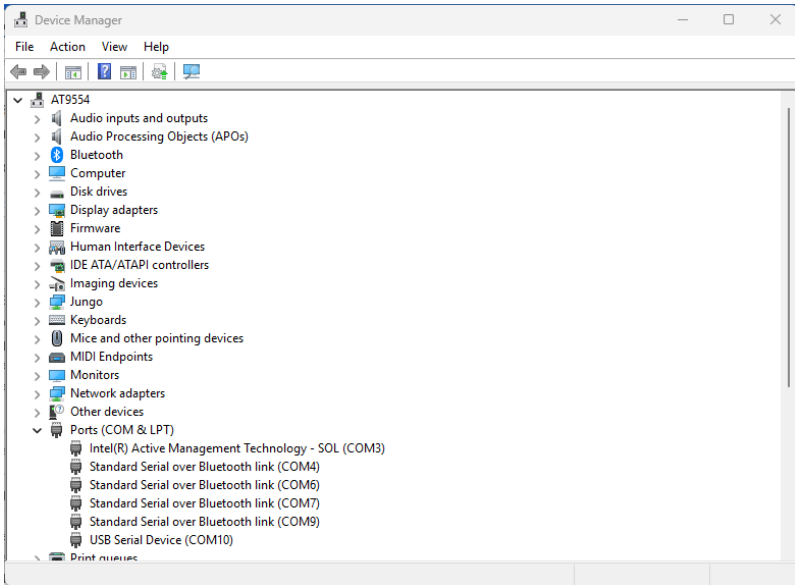
Data can be downloaded via the USB or Bluetooth. Once the data logger software has been installed, run the software and follow the downloading instructions given below.

### 5.3.1 Downloading Via USB

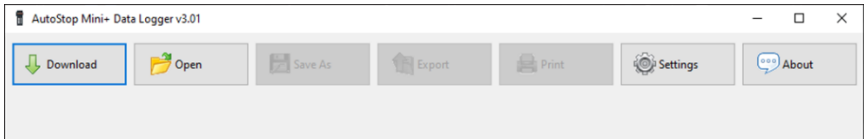


Once the data logger software is installed, run the data logger software and connect the Brake Meter to the PC, via the supplied USB cable.

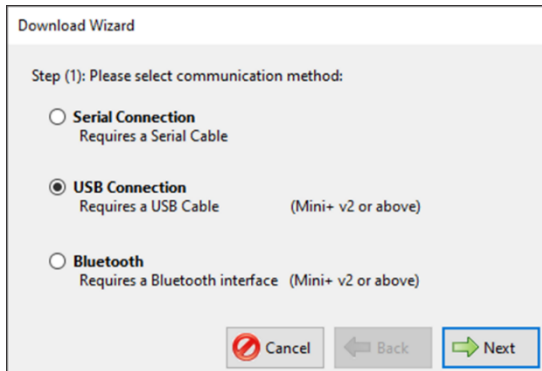
With USB cable connected to the PC, you can see the com port number in the Device Manager Ports (COM & LPT). In device manager, the Mini Plus (Export) will appear as USB Serial Device. In the following example, the COM port number is “**COM 10**”:



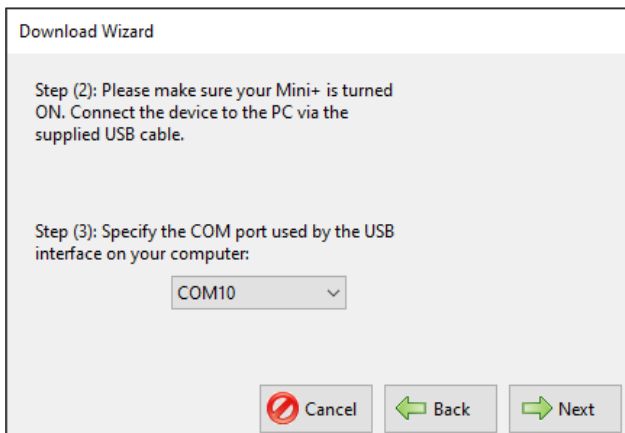
To download the results, open AutoStop Mini Plus Data Logger software and click **Download**.

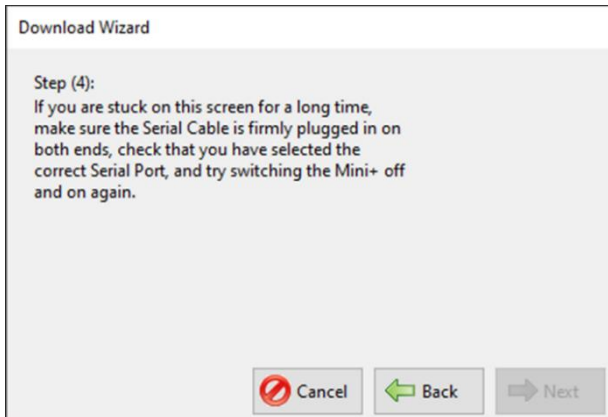


Select **USB connection** and then press **Next**.

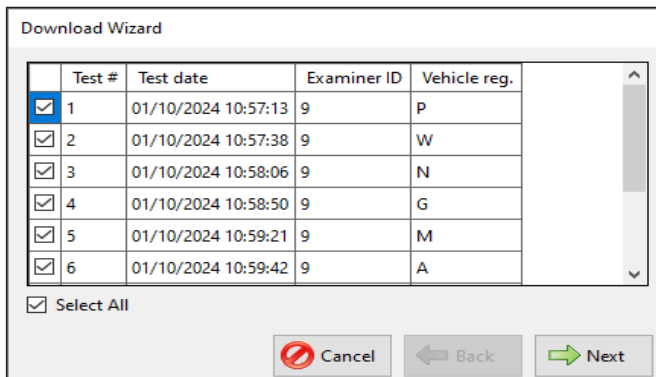


Select the COM port of the USB connection. Make sure the brake meter is switched on and it is connected to the PC via the USB cable. Press **Next** to continue.

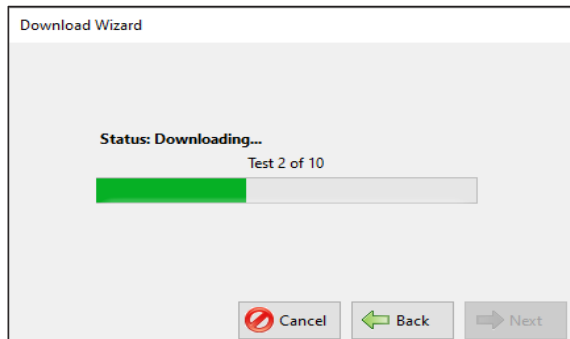
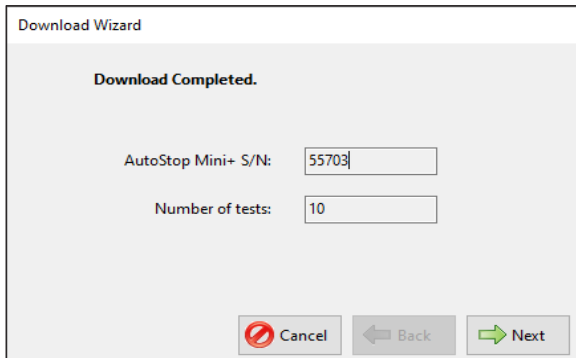




Once the device has been connected successfully, the downloader will display a list of all tests currently stored on the meter.



Select the tests that need to be downloaded and then press **Next**. The Data Logger software will automatically download all selected tests.



Once the desired tests have been downloaded, press **Finish** to return to the main window and view test results.

### 5.3.2 Downloading Via Bluetooth

**Note!** The below screenshots may not be the same on every computer. For information regarding Bluetooth device pairing on your PC, please refer to the instruction manual of your Bluetooth managing application.

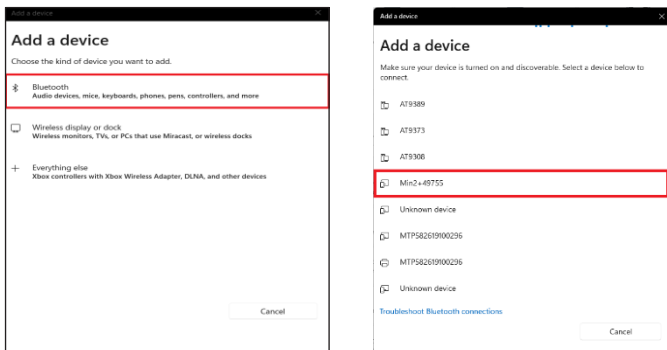
Ensure your PC supports Bluetooth connectivity before attempting to connect the brake meter via a Bluetooth interface.

With the Data Logger software installed, run the software on the PC and turn on the brake meter by pressing the **ON/OFF** button.

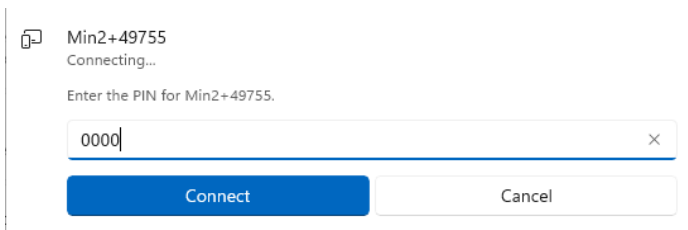
## CONNECTING BLUETOOTH



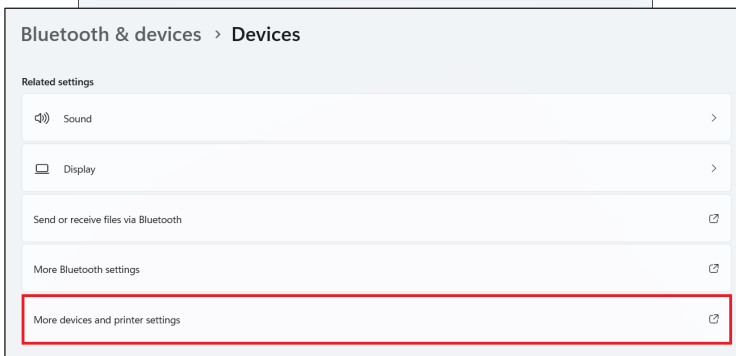
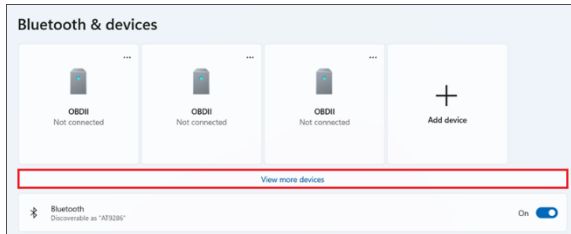
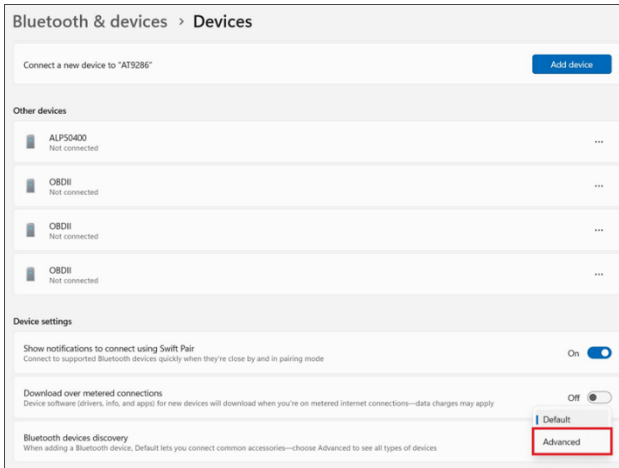
When connecting the Brake Meter for the first time using the Bluetooth interface, you will need to configure the Bluetooth connection. To do so, open your Bluetooth manager program on your PC and search for Min2+##### device, where ‘#####’ is the serial number of the brake meter.

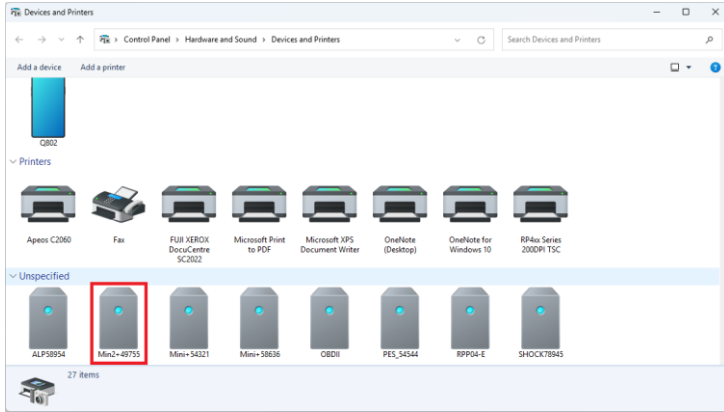


Select the device Min2+##### from the list of discovered Bluetooth devices and create pairing. When prompted for the pairing code or pin number, enter “0000”.

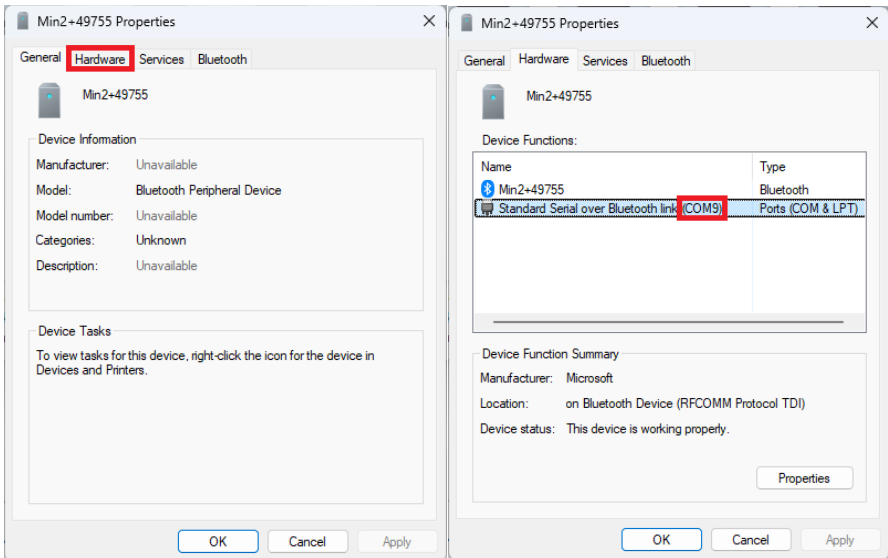


For Windows 11 systems, you may need to change the device discovery setting from **Default** to **Advanced** to detect the Mini Plus (Export) under “**View more devices**” in the Bluetooth settings.





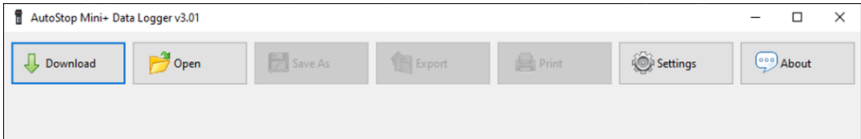
You can identify the COM port used for the Bluetooth connection in your computer's device settings.



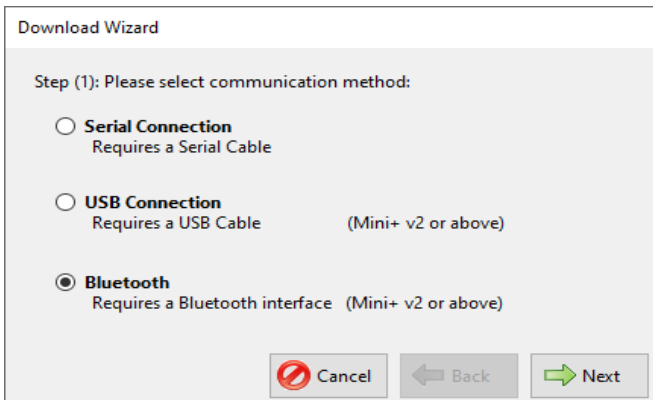
Once the Bluetooth connection is setup, the user can now download test results from Mini Plus (Export) using the Bluetooth interface.

## DOWNLOADING VIA BLUETOOTH

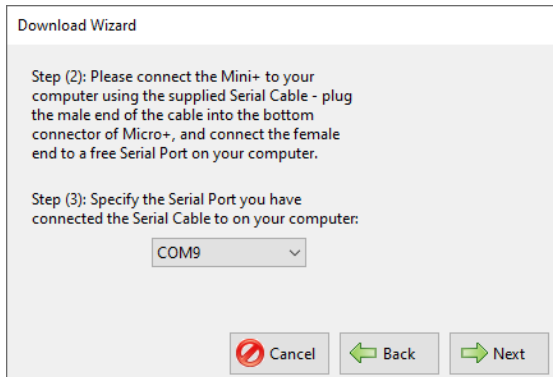
To download the results, open AutoStop Mini Plus Data Logger software and click **Download**.



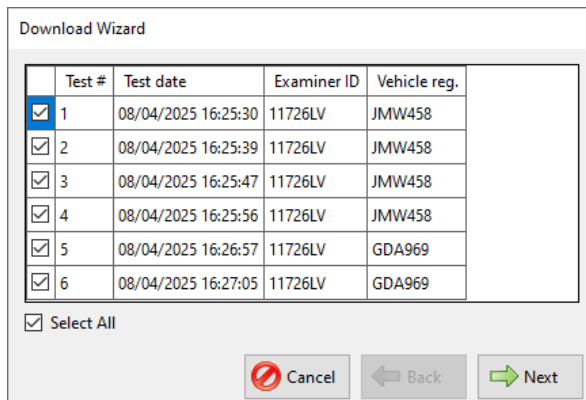
When the following connection window appears, select **Bluetooth** connection and press **Next**.



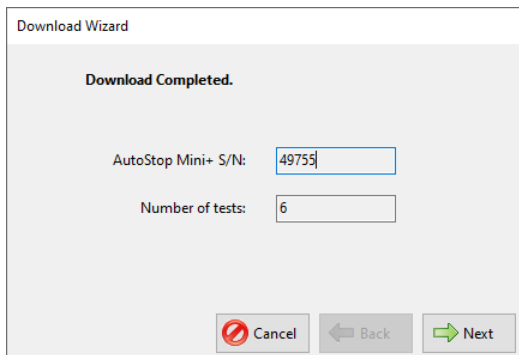
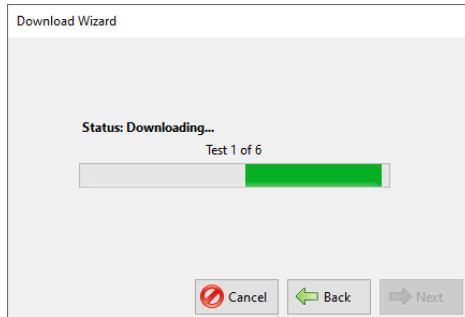
Select the COM port assigned to the Bluetooth connection for the brake meter. This will be the same COM port that was identified during the Bluetooth pairing process.



Make sure the Mini Plus (Export) is on. On your PC, press **Next** to continue. Once the connection is established, the data logger software will acquire a list of all tests currently stored on the device.



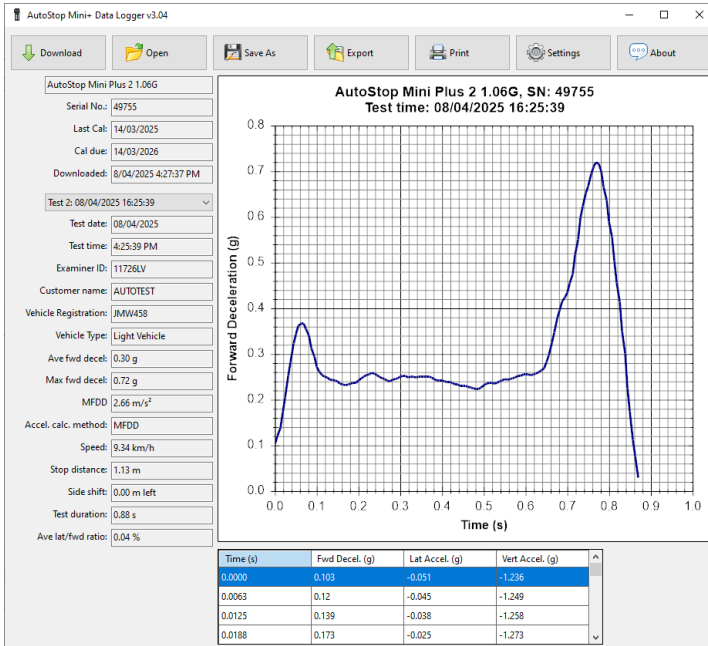
Select the tests that need to be downloaded and press **Next**. The data logger software will then download the selected tests. While downloading, the LCD screen of Mini Plus (Export) will display “**Uploading 00%....**”



Once the desired tests have been downloaded, press **Finish** to return to the main window and view test results.

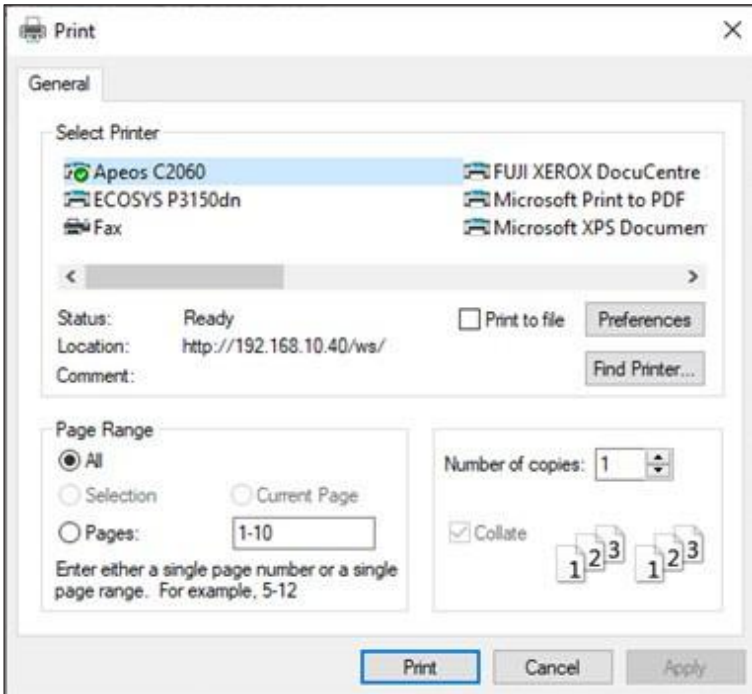
## 5.4 Using the Data Logger Software

The data logger will display all the saved tests; you can view the results of any test and view its corresponding graph for that test.



The menu buttons displayed on the top bar can be used to perform the following operations:

1. **Open:** Opens a previously saved test file on the computer.
2. **Save:** Saves the currently downloaded test results to a file on the computer.
3. **Export:** Allows test results to be viewed and saved in a Microsoft Excel-compatible format.
4. **Print:** Prints the selected test results. When this option is selected, a print dialog box will appear. Choose the required printer and, if needed, specify a range of tests to print. Click **Print** to begin printing. See below:



5. Setting: Allows you to view test results using the units set on the Mini Plus (Export) or select different units for display.
6. About: Displays information about the data logger software

## 6 DETAILED MENU REFERENCE

Display Main Menu	Display Sub Menu	Description	Button to Press
<b>Activate Unit?</b>		To activate the Mini Plus (Export)	Press <b>ENTER</b> or <b>→</b> to view next item on the main menu
		Enter the 5-digit Serial Number code of the unit, then press <b>ENTER</b> to confirm, or <b>DEL</b> to re-enter. Press any key to begin	Press any button to go to next sub-menu
<b>Code: -----</b>		To enter the 5-digit serial number code	Key-in the 5-digit serial number and press <b>ENTER</b>
	Unit Activated	An indication that the unit has been activated	Press <b>ENTER</b>
<b>Test?</b>		This does not appear if the unit is not activated. This is for carrying out the test	Press <b>ENTER</b>
<b>Examiner?</b>		Enter the name of the person carrying out the test. The Mini Plus (Export) will remember the previously stored Examiner ID. To change the Examiner ID, press <b>→</b> then key-in the new ID	Press <b>→</b> When cursor appears, key-in the examiner name
	Customer:	To enter the name of the customer	Type in the customer's name and press <b>ENTER</b>
	Reg No:	To enter the registration number of the vehicle being tested	Type in the registration number and press <b>ENTER</b>
	Test with GPS?	To decide whether the test requires GPS location	Press <b>ENTER</b> for <b>YES</b> and any other button for <b>NO</b>



	Press any button to commence test	An indication to press any key to commence the test	Press any button
	Stabilising...	When the unit is checking its stability	
	Ready to go...	Accelerate the vehicle to the desired speed	
	Prelude...	This indicates vehicle is moving forward	
	Sampling...	Indicates that the brakes have been applied and instrument is sampling data for calculation	
	Calculating...	Indicates that the test is complete and the instrument is calculating the results	
	Save?	To save the current test result	Press <b>ENTER</b> to save or —▶ to go to next sub menu
	Print?	To print the test result via Bluetooth printer (optional accessory)	Press <b>ENTER</b> to print or —▶ to go to next sub menu
	Print Another?	Option to print another copy of the same test	Press <b>ENTER</b> to print or —▶ to go to next sub menu
	Repeat Test?	To repeat the test	Press <b>ENTER</b>
<b>View Test?</b>		To view the stored data	Press <b>ENTER</b> to print or —▶ to go to next sub menu
	Latest test/(up to 200) e.g. 3/3	This is the latest result of the stored results – instrument can hold up to 200	Press <b>ENTER</b> to view results of the second test or Press —▶ to go to next sub menu
	2/3	This is the second result out of the stored results	Press <b>ENTER</b> to view results of the second test or Press —▶ to go to next sub menu

	1/3	This is the first result out of the stored results	Press <b>ENTER</b> to view results of the second test or Press <b>—▶</b> to go to next sub menu
	Clear Results?	To clear the results stored on instrument	Press <b>ENTER</b> to clear stores data or press <b>—▶</b> to go back to the main menu
	Are you sure? Y/N		Use <b>—▶</b> to select <b>YES</b> or <b>NO</b> , then press <b>ENTER</b>
<b>Set Accel. Unit?</b>		To set the units of average and maximum deceleration	Press <b>ENTER</b> to set the acceleration unit or <b>—▶</b> to go to next main menu
	Accel unit: $m/s^2$	To set the units of average and maximum deceleration in terms of ' $m/s^2$ '	Press <b>ENTER</b> to set or <b>—▶</b> to select another unit
	Accel unit: g	To set the units of average and maximum deceleration in terms of 'g'	Press <b>ENTER</b> to set or <b>—▶</b> to select another unit
	Accel unit: %	To set the units of average and maximum deceleration in terms of '%'	Press <b>ENTER</b> to set or <b>—▶</b> to select another unit
<b>Imperial/Metric?</b>		To change the units of speed, stopping distance and side shift	Press <b>ENTER</b> to set the units or <b>—▶</b> to go to main menu
	I/M: Metric	To change the units of speed, stopping distance and side shift to metric	Press <b>ENTER</b> to set the unit to metric or press <b>—▶</b> to select another unit
	I/M: Imperial	To change the units of speed, stopping distance and side shift to imperial	Press <b>ENTER</b> to set the unit to imperial or press <b>—▶</b> to select another unit
<b>View Clock?</b>		To view the date and time on the instrument	Press <b>ENTER</b> to set the units or <b>—▶</b> to go to main menu
	Date: dd/mm/yy	Shows the date on the instruments	Wait until display shows time or Press <b>—▶</b> to view

			time or Press <b>ENTER</b> to go to main menu
	Time: hh:mm:ss	Shows the time on the instrument. <i>Note: press '1' to toggle daylight saving. When daylight saving is enabled, '**' will be displayed on LCD.</i>	Either wait until the display shows date, Press <b>→</b> to view date or Press <b>ENTER</b> to go to main menu
<b>Battery Life?</b>		Shows the battery life on the instrument	Press <b>ENTER</b> to view battery life or press <b>→</b> to return to main menu
<b>View Accel. ?</b>		To view X, Y and Z-axes of the accelerometer	Press <b>ENTER</b> to view acceleration or press <b>→</b> to return to main menu
	Vsum:	Shows the vector sum of all three axes	Press <b>→</b> to view another axis or press <b>ENTER</b> to go to main menu
	X:	Shows the X-axis of the accelerometer	Press <b>→</b> to view another axis or press <b>ENTER</b> to go to main menu
	Y:	Shows the Y-axis of the accelerometer	Press <b>→</b> to view another axis or press <b>ENTER</b> to go to main menu
	Z:	Shows the Z-axis of the accelerometer	Press <b>→</b> to view another axis or press <b>ENTER</b> to go to main menu
	Tilt:	Shows the tilt angle of the brake meter	Press <b>→</b> to switch to another screen or press <b>ENTER</b> to go to main menu
<b>View Test Count?</b>		To view the total number of tests carried out on the Mini Plus (Export)	Press <b>ENTER</b> to view the count or <b>→</b> to go to main menu
<b>Printer Type?</b>		Allows user to configure printer settings	Press <b>ENTER</b> to open menu
	Bluetooth: YES	To enable or disable Bluetooth printer <i>Note: if Bluetooth printer is disabled, the printing will occur via RS232</i>	Press <b>→</b> to toggle between "YES" and "NO", press <b>ENTER</b> to save settings and return.

<b>Language?</b>		This allows users to change the interface language	Press <b>ENTER</b> to view available languages
	English?	Changes interface language to English	Press <b>ENTER</b> to select English language → to see the next language.
	Spanish?	Changes interface language to Spanish	Press <b>ENTER</b> to select Spanish language or → to see the next language
	French?	Changes interface language to French. Note: results obtained using French language will be based on SRV-P036 standard	Press <b>ENTER</b> to select French language or → to see the next language

## 6.1 LED Charging Port Description

LED	RED	ORANGE	GREEN
LED 1 	Connected to a USB	Downloading, either via data logger or firmware updater	Bluetooth Active
LED 2 	ON → Charging Battery OFF → Battery not charging; either because USB is not connected, overheating or the battery is full	/	/

## 7 SPECIFICATIONS

### 7.1 Hardware Specifications

Measurement Range: -2.0 to +2.0g with total uncertainty of 2%

Temperature Range: -10 to +50C

### 7.2 Features

- Determines tri-axial deceleration; forward as well as sideways deceleration (lane change)
- Calculates and displays SRV36 and other indices
- Simple 12 button operation via a tactile membrane pad
- Can be installed anywhere in the vehicle
- Self-aligning by identifying its orientation at the beginning of each test
- Lightweight (< 500grms) and compact (90 x 200 x 35mm)
- LCD display
- Adjustable display control
- Automatic start function
- Automatic shut-off after 15 minutes to preserve battery life (10 hours of running time)
- Built-in integrity check
- Built-in real time clock
- Calibration is internationally traceable through NATA
- Calibration interval 12 months
- 12 months warranty
- Comprehensive after-sales service and assistance
- EIA RS-232c
- Bluetooth interface

- USB interface
- Memory storage for 200 tests
- PC download capability and test graph results

## 8 SERVICE AND REPAIR

The Mini Plus (Export) must be re-calibrated every one year. The reason for this is to maintain creditability in tests and acceptance of data according to international standards.

Each time the unit is turned on, the LCD will show the date that the re-calibration is due. At the time the unit is due for re-calibration, the LCD screen will show: **“Calibration Due! Please contact your vendor for re-calibration”**, and further testing will be disabled.

There are two ways of calibrating the Brake Meter - either return the AutoStop Mini Plus (Export) to your local distributor or by returning the Brake Meter directly to Auto Test Products (as below).

### 8.1 Packaging

When sending for repair or service, the unit should be packaged in the original shipping container. However, where the container is not available, it is important to remember that you are shipping an electronic instrument. Bubble pack or foam should surround the unit and should be inserted into a sturdy cardboard box. Please ensure that the container is locked or otherwise obviously secured.

### 8.2 Shipping

#### Labelling

A label should be placed on the outside of the container noting “Device Fragile”.

#### Freight Carrier

Container should be sent ‘Freight Prepaid’. *AutoTest*<sup>®</sup> has no preference on freight carriers.

Return freight details must be included.

**Addressing**

Please address to

AutoTest® Products Pty Ltd  
Att: Service Department  
69 Parsons St  
Kensington, VIC 3031 AUSTRALIA  
Phone: +61 3 8840 3000  
Email: [service@autotest.com.au](mailto:service@autotest.com.au)

## 9 WARRANTY

### 9.1 Application of these Conditions

These conditions, including any written variations agreed by us, apply to all supplies made by AutoTest® Products Pty Ltd (the Supplier) to the purchaser identified in the relevant invoice or contract. Together with these conditions, as amended from time to time under their terms, the applicable payment terms, invoices, and purchase orders exchanged between the parties form the contract.

### 9.2 Inconsistencies

Where the supply purports to be made on or subject to terms and conditions other than these conditions, the Purchaser agrees that such other terms and conditions are disregarded and form no part of the Contract unless the Supplier agrees otherwise in writing.

### 9.3 Warranty Terms and Conditions

When you purchase an AutoTest® Product you are required to complete the warranty registration form and return to AutoTest® Products Pty Ltd within 10 days of purchase of the product.

AutoTest® Products or any Authorised AutoTest® Service Centre warrants this product against defects in material and workmanship for a period of 12 months from the original date of purchase.

This warranty applies only to products and components supplied by AutoTest® Products which can be identified by the trade name or logo affixed to them or by other documents.

AutoTest® Products does not warrant any products not supplied by AutoTest® Products.

Our goods come with guarantees that cannot be excluded under the Australian Consumer Law.

Subject to section 8.1 and the terms below, as your Standard Warranty AutoTest® agrees to repair or replace at AutoTest®'s cost the AutoTest® product, and any AutoTest® accessory supplied with the product, purchased by you in Australia from a AutoTest® Authorised Dealer when the product does not perform in accordance with the manufacturer's specifications during the Warranty Term, commencing from the date of purchase. Transit insurance and return freight will be at the owner's expense.

AutoTest® Products or any Authorised AutoTest® Service Centre reserves the right to refuse warranty repair if accident, abuse, misuse or misapplication has damaged the product. In transit or as a result of service or modification by other than an Authorised Service Centre, nor are any other warranties expressed or implied, including any regarding merchantability or fitness for any other particular purpose.

Products presented for repair may be replaced by refurbished products of the same type rather than being repaired. Refurbished parts may be used to repair the products. Replacement of the product or a part does not extend or restart the Warranty Term.

The product will be at the owner's risk whilst in transit to and from the AutoTest® Authorised Service Centre.

AutoTest® will bear the expense of transport where transported by AutoTest® or its Authorised representatives. Any other expense of claiming the warranty will be borne by you.

AutoTest® and its Authorised Service Centres may seek reimbursement of any costs incurred by them when the product is found to be in good working order.

AutoTest® Products or an Authorised Service Centre is not responsible for incidental or consequential damage resulting from the breach of any express or implied warranty, including damage to property and, to the extent permitted by law, damages for personal injury.

To the full extent permitted by law, but subject always to 8.1, the Standard Warranty does not cover:

- If the product has not been installed, operated, maintained or used in accordance with the manufacturer's instructions or specifications provided with the product.
- If the factory-applied serial number has been altered or removed from the product.
- To damage, malfunction or failure resulting from alterations, accident, misuse, abuse, fire, liquid spillage, mis-adjustment of customer controls, use on an incorrect voltage, power surges and dips, thunderstorm activity, voltage supply problems, tampering or unauthorised repairs by any persons, use of defective or incompatible accessories, the operation of a computer virus of any kind, exposure to abnormally corrosive conditions or entry by any insect, vermin or foreign object in the product.
- The use of proper paper and stationery is very important to the operation of products with printers. Use of non-standard paper will jam the printer and/or wear the print head. Use of non-standard paper will void the warranty.
- Repairs attempted or made by other than our regional repair centre or authorised warranty service centre.
- To damage arising during transportation, installation or while moving the product, or to any transportation costs of the product or any parts thereof to and from the owner, unless otherwise specified in these Warranty Terms.
- Conditions or malfunctions caused by the reasonable effects of fair wear and tear or the malfunction of normally wearing parts, which include but are not limited to: batteries, plugs and leads.
- To any third-party software or hardware not contained in the product as originally configured by the manufacturer.
- To any failure, to the extent that the failure is not a failure of the product to perform in accordance with its specifications.
- To replacement or repair of any
  - 1) consumables (including cables), paper, ink ribbons or
  - 2) batteries (beyond 3 months from date of purchase), or
  - 3) lost parts or accessories.
- To service of any product whilst it is outside Australia.
- To any wear and tear.
- AutoTest® will not be liable for any loss, damage or alterations to
  - 1) third party hardware or software.  
or
  - 2) programs, data or information stored on any media or any part of the product, no matter how occurring.

or

- 3) for any loss or damage arising from loss of use, loss of profits or revenue, or for any resulting indirect or consequential loss or damage.
- Modified, abused, neglected, accidentally damaged or excessively worn products, or products that have become damaged or defective as a result of improper use.
  - AutoTest® products that are not distributed through AutoTest 's authorised distributors and resellers.

**(Warranty non-transferable)** This warranty is not transferrable beyond the original purchaser.

Warranty is subject to AutoTest® Products Standard Terms & Conditions published widely. For more detailed warranty clause, please visit our website

[www.autotest.net.au/terms-and-conditions/](http://www.autotest.net.au/terms-and-conditions/).



**AUTOTEST®** Products Pty Ltd  
 69 Parsons Street, Kensington, VIC  
 3031, Australia  
 Phone: (+613) 88403000  
 Email: [service@autotest.net.au](mailto:service@autotest.net.au)  
[sales@autotest.net.au](mailto:sales@autotest.net.au)